



CATANA 431 Owner's Version

Shipyard:	Catana Catamarans	Engines:	Volvo 2x40 HP
Model :	Catana 431 Owner's Version	Length:	13.10 m
Draft :	1.10/2.30 m	Beam :	7.25 m
Material:	GRP	Cabins:	3 DBL
Year:	2005	Price:	370 000 €

Equipment of this Catana 431 Owner's Version:

Engines: Volvo-Penta D2-40 hp 2x40HP, Saildrives S130, Volvo two-blade fixed propellers, (Engines serviced, cooling circuits and Saildrive seals replaced in October 2023), Diesel tanks 2x360L

Layout: Owner's version - 3 double cabins

Owner's hull starboard: Owner's cabin with King bed (180x190cm), closets and wardrobe, forward large shower room with electric toilet.

Port hull: 2 double cabins, aft 180 x 190 and forward (160x195cm), each with shower + toilet and closets

Comfortable and spacious saloon with a table that can accommodate up to 8 people.

Galley: ENO hob and oven, Front-opening 110 L freezer / fridge (March 2024), Front-opening 100 L fridge, Microwave (June 2023), Crockery and kitchen utensils

Sails and rigging : Dacron mainsail Incidences (April 2023), Lazy bag (April 2023), Dacron Genoa, Northsails Dacron Gennaker, Hood asymmetrical spinnaker, Standing rigging / masthead / masthead sheaves / VHF antennas / antenna connection cables + navigation light power supply (2021), Raymarine wind vane (2021), Martingale (2022), 2 furlers in place: Profurl C430 genoa (Oct. 2022), Profurl gennaker (revised in 2021), Anodized aluminum mast + boom, Harken 50 electric central winch on aft beam with secondary control at starboard helm, Lewmar winches: 2x48 + 2x44 + 2x40.

Electronics: Raymarine Axiom+ 12" chart plotter (2023) (Europe + Antilles/Central America mapping), Raymarine Quantum 2 doppler radar (2023), Shipmodul miniplex MNEA / Wi-Fi multiplexer (2023), Raymarine AIS 700 Sotma standard (2023), Garmin 210i ASN / DSC VHF, 2 x ICOM IC-M25 handheld VHF radios, 2 Raymarine autopilots: Main: ACU 200 unit, controlled at both helm stations or via remote or Axiom+, Backup: controlled at chart table, Raymarine ST 60 Multi + Wind vane / anemometer + autopilot displays, Raymarine i70S display (Oct. 2023), Portable Iridium satellite phone 9555, Starlink Satellite Antenna, Fusion RA210 Hi-fi system + 2 Cabasse speakers in saloon + 2 Fusion speakers in cockpit (2022)

Electricity: Dometic air conditioning Owner's cabin Starboard + saloon 220 V, 8 Sun power Walk-on Bimini Solar panels 8x125 w totalling 1000 w (2021), Victron Multiplus 12/220 V/2000 w Inverter charger, Victron BMW-700 battery monitor, 12/220V electrical circuit, AGM Mastervolt Service batteries 6x160 Ah = 960 Ah, 2 engine batteries 70 Ah (starboard 2023), 12V fans, Silentwind pro wind turbine (2021).

Plumbing: Water tanks 2x400 L, Black water tanks 2x68 L, Aqua-base 60 L/h 12V water-maker serviced in 2024 (new motor + 1 membrane and caps), Stainless steel water heater 2x40 L, Pressurized hot and cold water, Sea water foot pump in the galley

Deck: 2 stainless steel steering wheels, Hardtop Bimini, Swim ladder, transom shower, 2 forward peak seats, Northsails trampoline, Cockpit upholstery (2021), Davits, 1500 w electric windlass with remote control, chain counter at starboard helm, Fenders and mooring lines, Spade 30 kg main anchor, Anchoring 70 m 10 mm chain (2023) + 12 m rope, Secondary anchoring, Plastimo 8 pers. life raft Checked in 2021, Individual format EPIRB, Zodiac Cadet double aluminum floor dinghy length 3.00 m (2020), Yamaha 4 stroke 9.9HP outboard engine (2024), Regulatory safety equipment, Teak in cockpit and on transoms

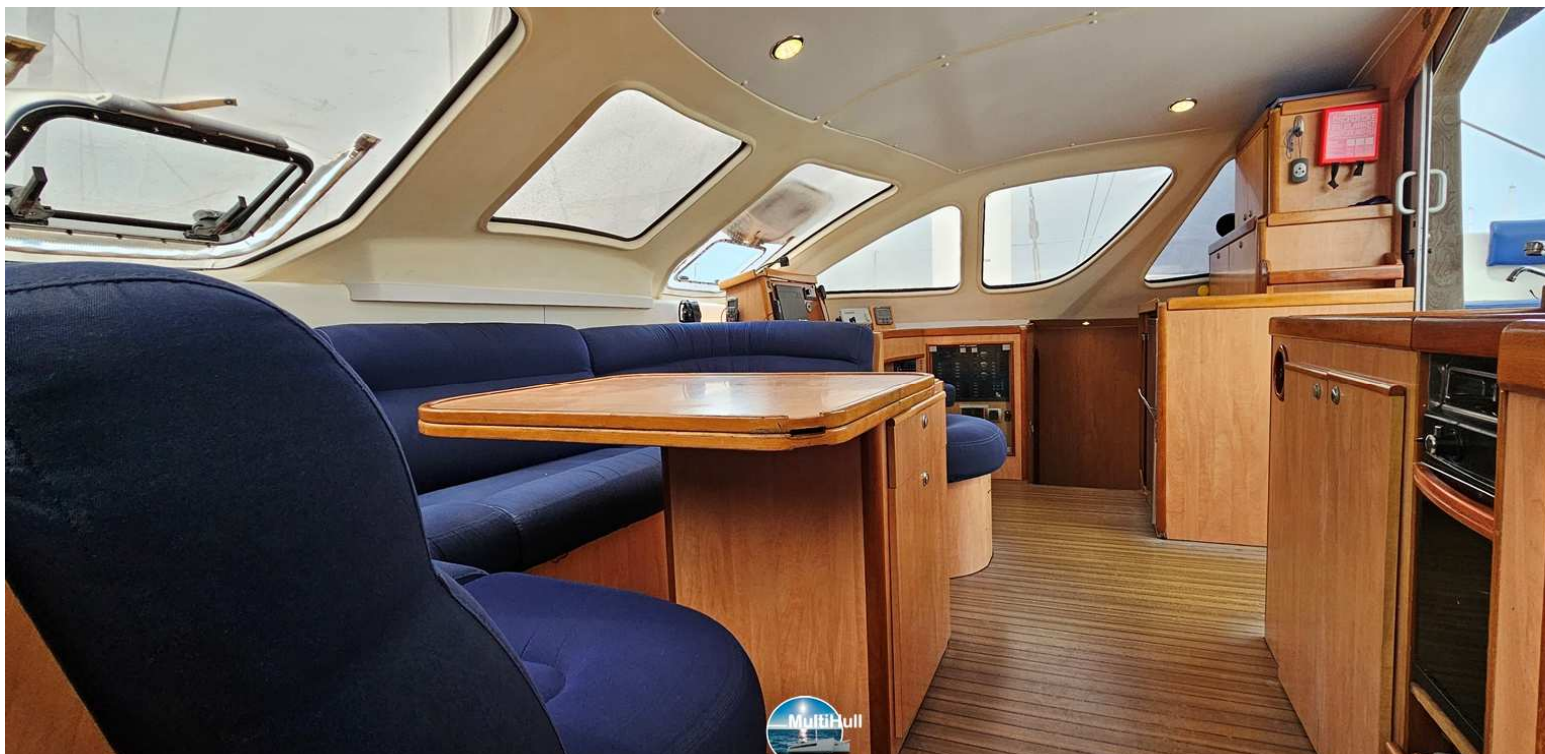
Miscellaneous: French flag, replaced keels in 2020, Copper coat (2021), All through-hulls and valves below the waterline replaced in Oct. 2023 (True design), Lower bearing sleeves 2021, Numerous spare parts, supplies, and tools.

Inventaire et état du produit donnés par le propriétaire, et n'engageant pas notre société



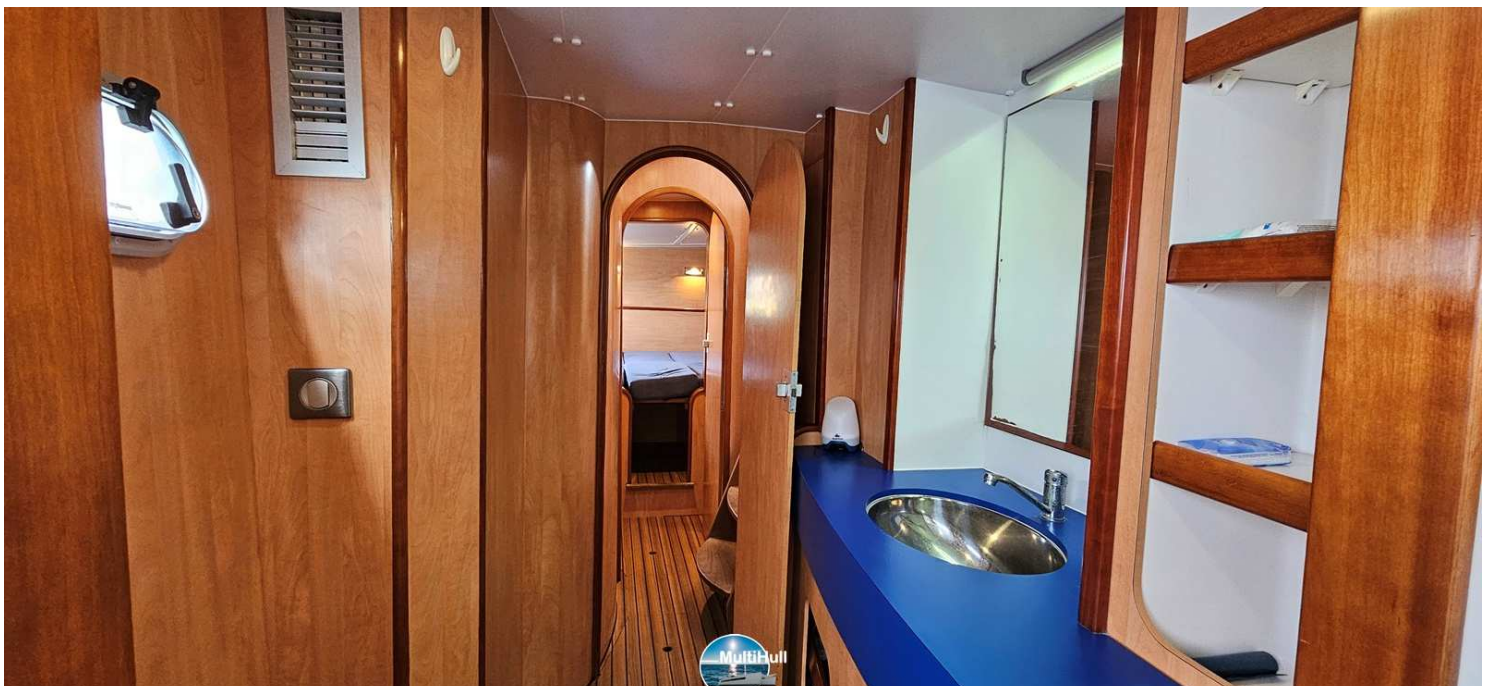
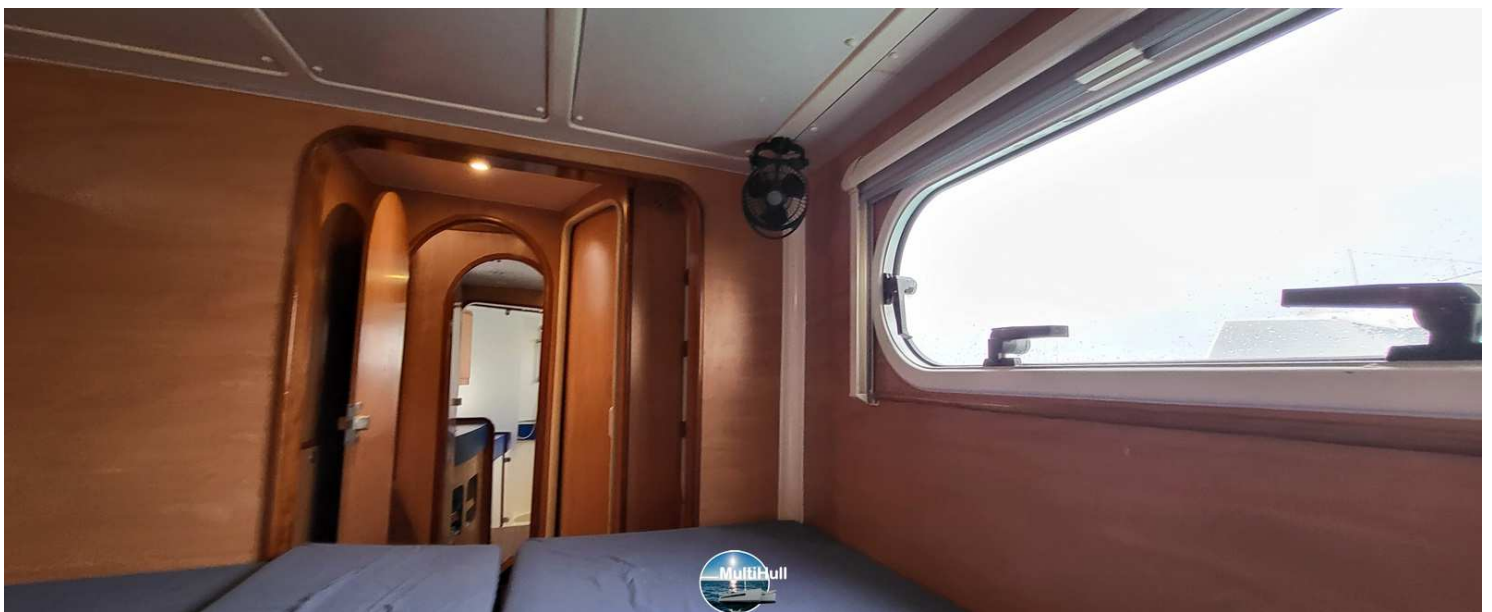


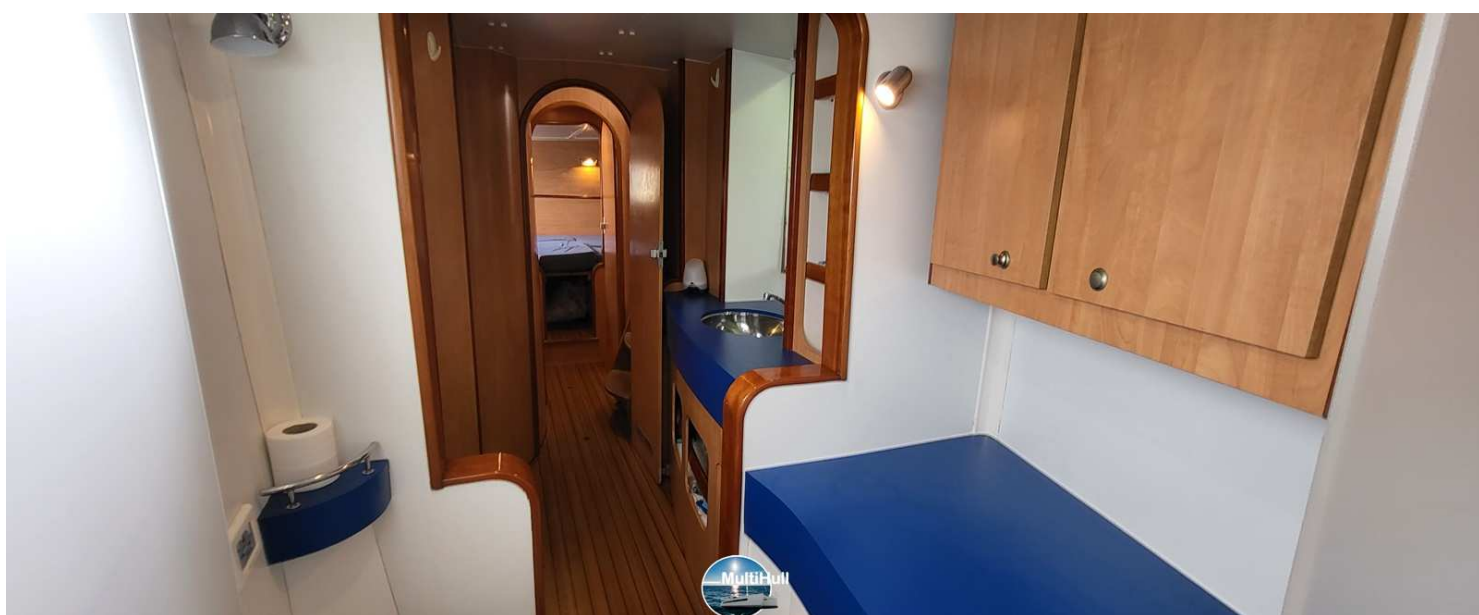


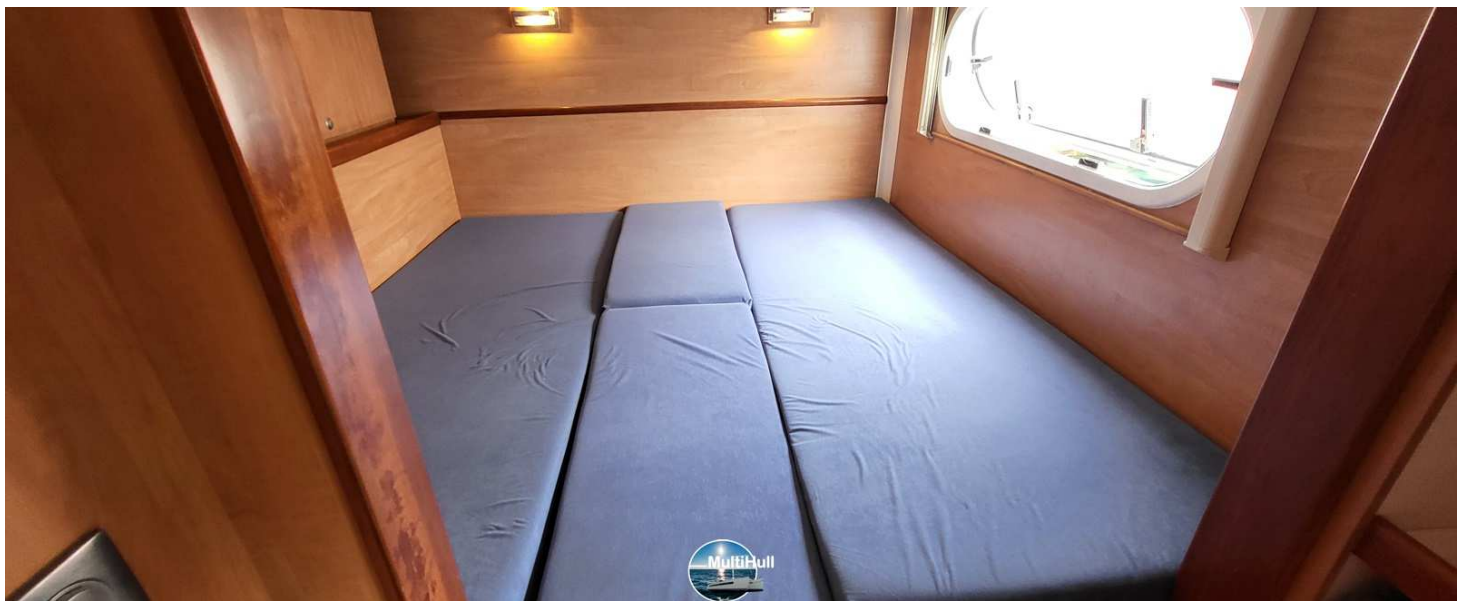
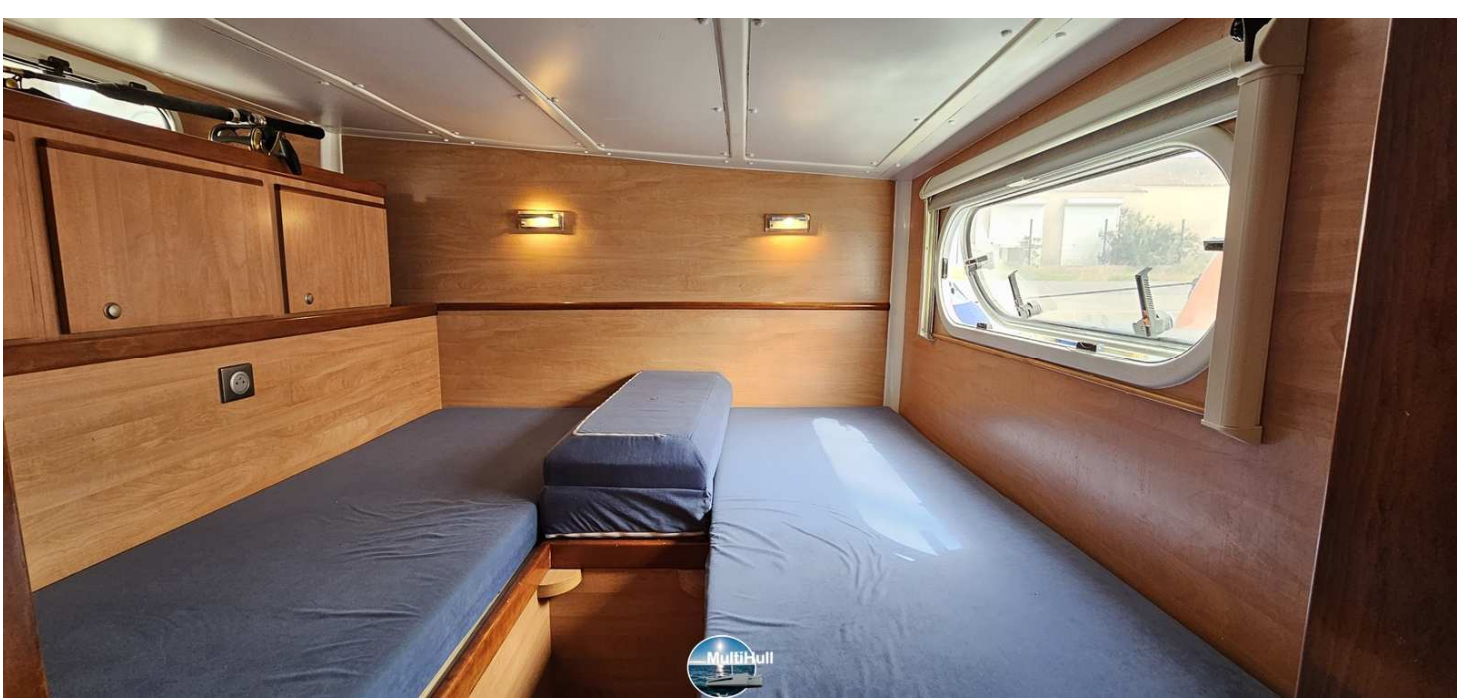














+33 (0)6 51 81 96 33

multihull@outlook.com

www.multihull.fr