



## NEEL 43

Shipyard:	Neel trimarans	Engine:	Volvo 50 HP
Model:	Neel 43	Length:	12.90 m
Draft :	1.50 m	Beam:	7.40 m
Material:	Composite sandwich infusion	Cabins:	3 DBL
Year:	2024	<b>Price:</b>	<b>495 000 € EX-VAT</b>

**Equipment of this 2024 Neel 43 Premium Pack:** Volvo 50 HP Sail drive engine, Folding propeller, 12V bow thruster with dedicated batteries and charger

**Layout:** 3 Double cabins/ 1 Bathroom with washbasin and hot/cold water shower

**Comfort Pack:** *Master cabin:* carpentry wardrobe, solid wood bulkheads (along the bed, on the forward part), Bolon non-glued flooring.

*Forward cabin:* Alpi panel at the headboard, Alpi coating shelves, Bolon flooring

*Portside cabin:* Alpi shelves furniture, Bolon flooring

*Saloon:* Bolon flooring, central Alpi ceiling, solid wood bulkheads forward of the chart table, 6 storage bins

Curtains in cabins, Alpi woodwork, Reading lights with USB outlet.

**Galley:** 130L fridge, 2-burner gas hob and gas oven with grill, Upper storage cabinet above the kitchen

**Sails and rigging:** Dacron fully battened mainsail on ball bearing carriages 2 reefs 57 m<sup>2</sup>, Dacron genoa on furler with Dacron UV strip 43 m<sup>2</sup>, Lazy bag, Halyard for headsail on lashing

**Electronics:** B&G electronics pack: Log/depth/wind/pilot and the following displays: 1 VHF CORTEX with AIS combined with internal navigation station + 1 pilot control at the external steering station + 1 Triton at the external steering station, ZEUS 3S 12" display at the steering station, Fusion Apollo 770 audio

**Electricity:** 1 set of 3 house batteries 495 A 12 V, 1 Optima 12V 50 A starting battery, 230 V system: 6 230 V sockets + 25 m shore power line, service battery charger, engine battery charger, Combi 230 V/12 V power 2000 W/80 A, LED navigation lights, LED interior lights, 2 solar panels on forward roof total 312 w

**Plumbing:** 12 V 60 L/H watermaker, black water tank, 40 L water heater, pressurized hot and cold water

**Deck :** "Cocktail" cockpit table and saloon table, 12 V electric windlass with foot control, Upholstery in cockpit and saloon, Hot/cold water shower on port transom, Mooring kit (3 lines and 6 fenders), Cockpit hardsup, Steering station Bimini, Anchor locker, Mooring kit: 50 m cable + 60 m chain + 20Kg Kobra anchor, Stainless steel anchor davit integrated under the bowsprit, Gas and mooring lockers, Dinghy lifting by LINE DRIVER with remote control, Swim ladder, 2-piece trampoline

**Miscellaneous:** Antifouling with epoxy primer, Safety equipment for 8 persons French standard, 8 PAX life raft, Light gray hull gel coat



### MultiHull

GSM **+33 (0)6 51 81 96 33**  
Email: [multihull@outlook.com](mailto:multihull@outlook.com)  
Site Web: [www.multihull.fr](http://www.multihull.fr)





GSM. +33 (0)6 51 81 96 33  
Email: [multihull@outlook.com](mailto:multihull@outlook.com)  
Site Web: [www.multihull.fr](http://www.multihull.fr)





GSM. +33 (0)6 51 81 96 33  
Email: [multihull@outlook.com](mailto:multihull@outlook.com)  
Site Web: [www.multihull.fr](http://www.multihull.fr)



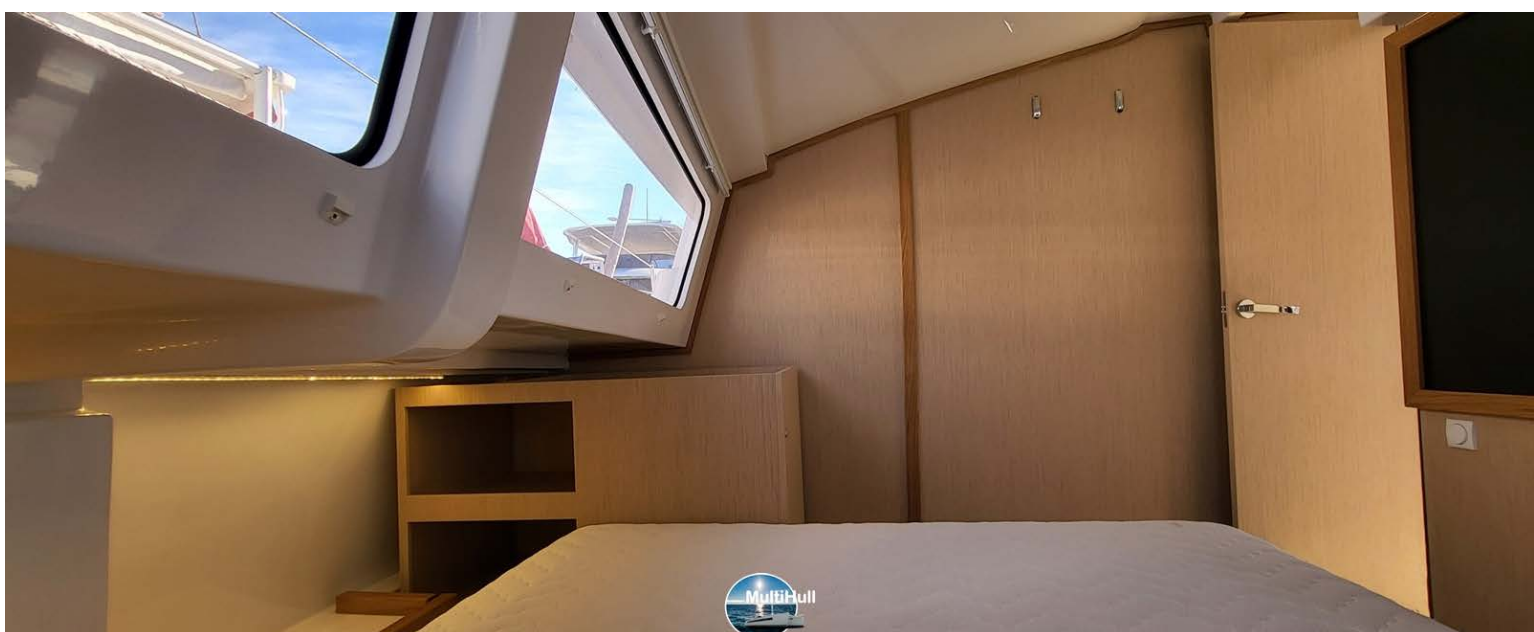


GSM. +33 (0)6 51 81 96 33  
Email: [multihull@outlook.com](mailto:multihull@outlook.com)  
Site Web: [www.multihull.fr](http://www.multihull.fr)



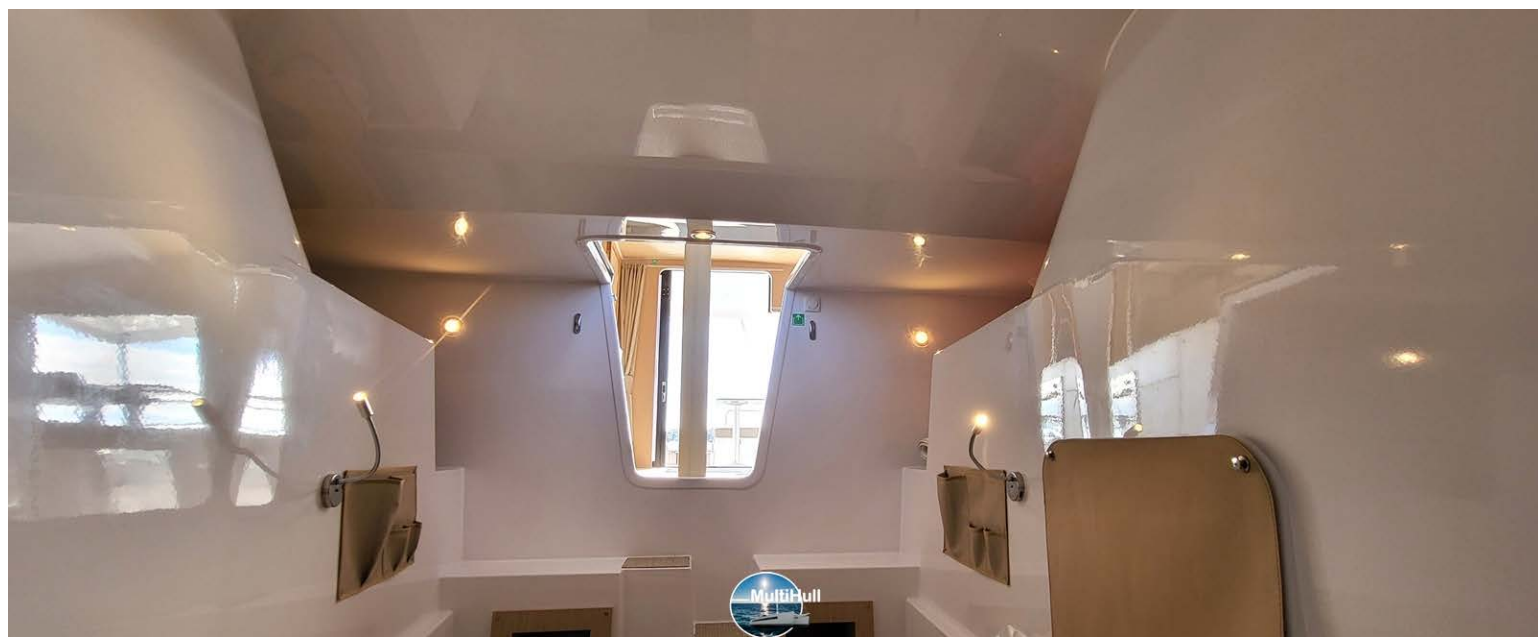


GSM. +33 (0)6 51 81 96 33  
Email: [multihull@outlook.com](mailto:multihull@outlook.com)  
Site Web: [www.multihull.fr](http://www.multihull.fr)



GSM. +33 (0)6 51 81 96 33  
Email: [multihull@outlook.com](mailto:multihull@outlook.com)  
Site Web: [www.multihull.fr](http://www.multihull.fr)





GSM. +33 (0)6 51 81 96 33  
Email: [multihull@outlook.com](mailto:multihull@outlook.com)  
Site Web: [www.multihull.fr](http://www.multihull.fr)